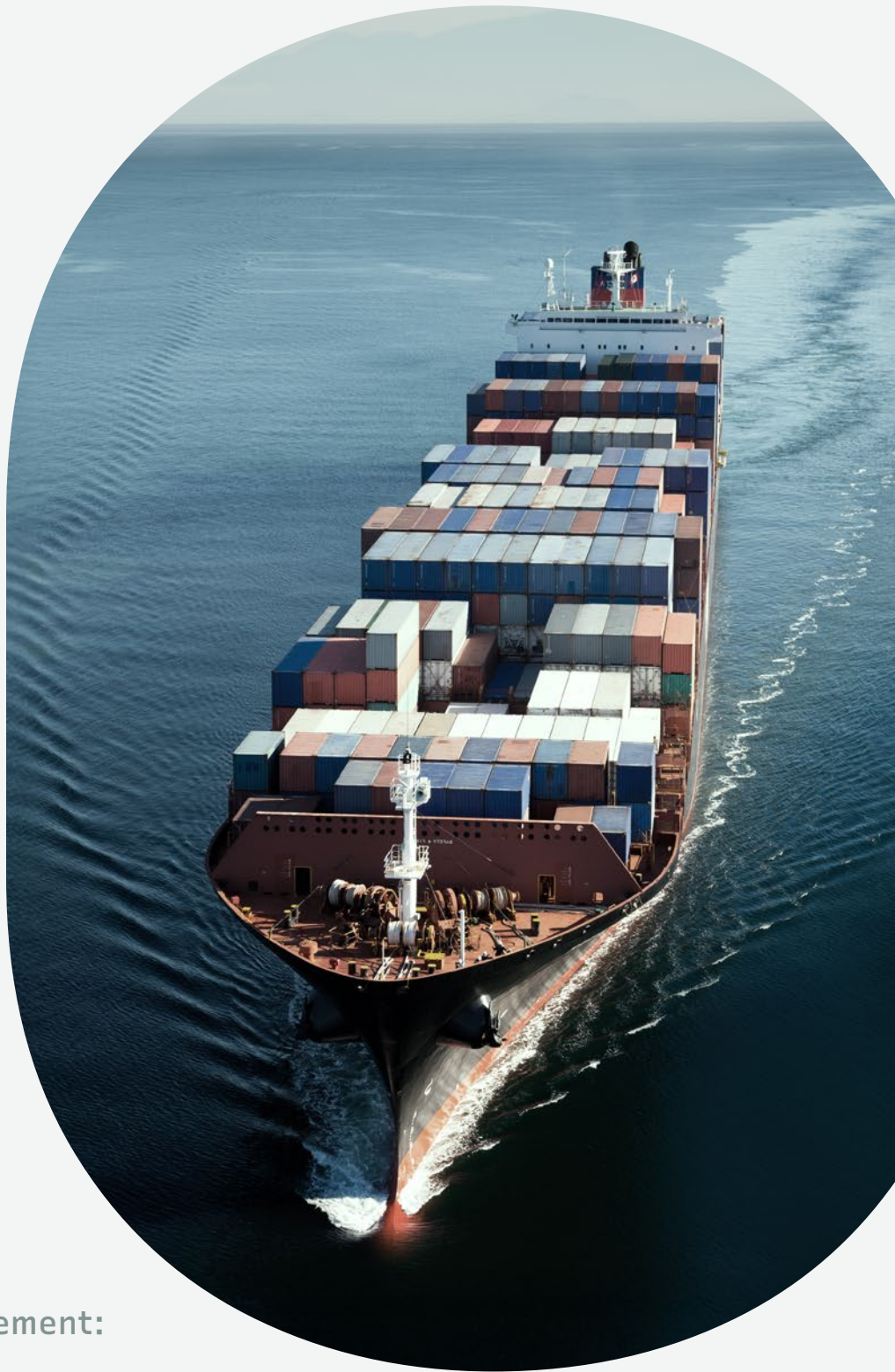


# OneOcean



Voyage Planning & Management:

# EnviroManager+

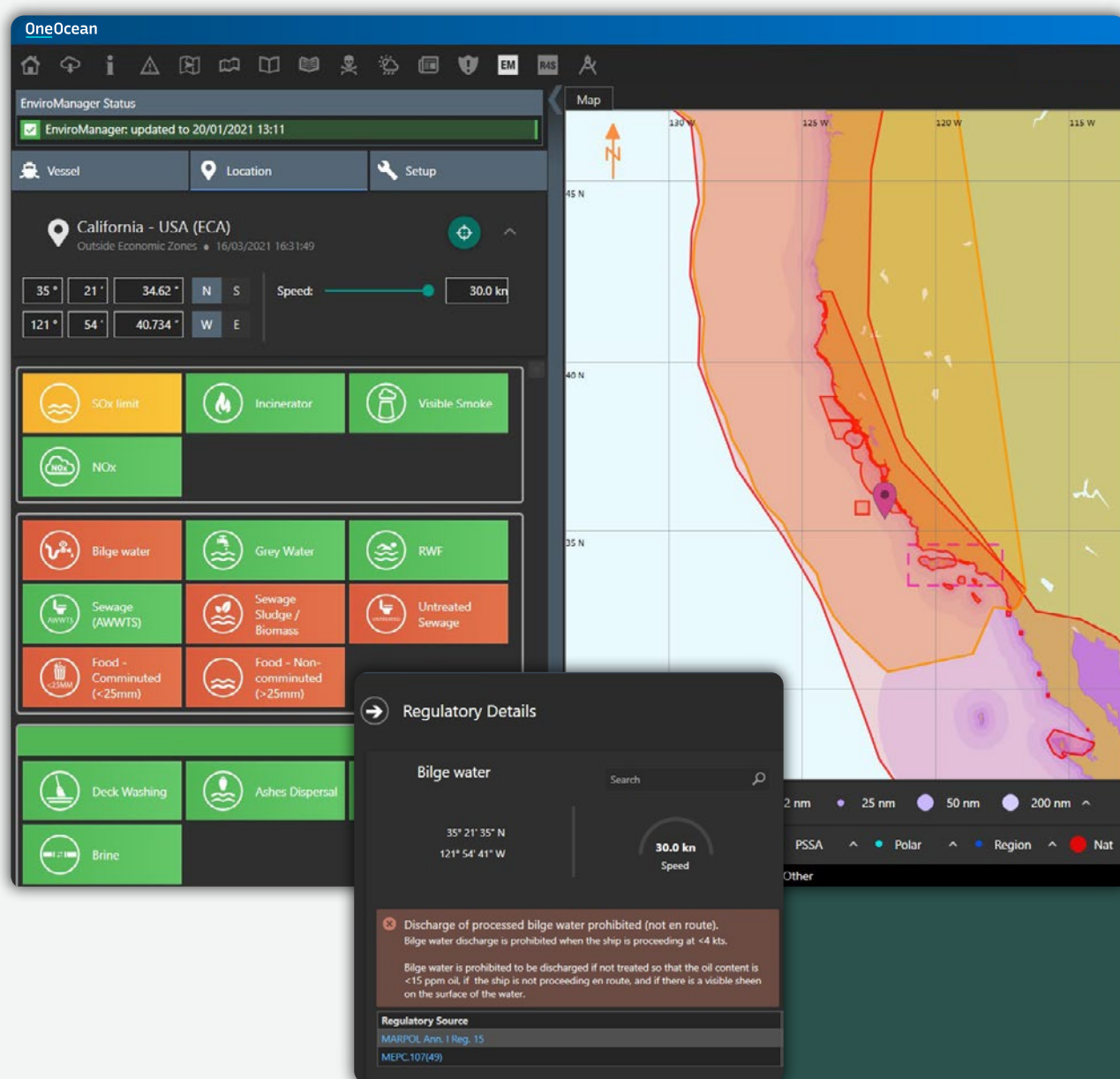
Efficient, clean, and compliant  
voyages for safer seas

# Plan ahead and exceed regulations

**EnviroManager+ transforms how ship and shoreside teams manage environmental compliance, providing clarity and peace of mind on requirements along routes.**

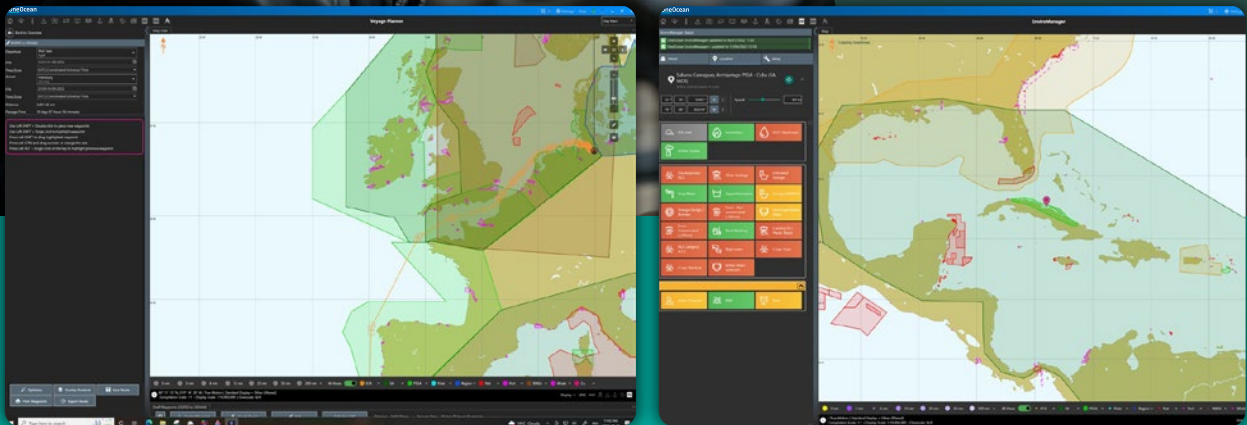
The compliance-focused solution is designed to simplify voyage planning and reduce operational risk. It removes the time-consuming task of sourcing regulatory data, equipping teams with the tools they need to plan with confidence and stay ahead of requirements – helping to avoid costly fines and reputational damage.

Covering over 78,000 maritime zones and 182 nations, EnviroManager+ empowers ship and shoreside teams to view and interrogate environmental regulations in effect across the globe. It also enables the setting and deployment of environmental standards across entire fleets from ashore, streamlining compliance from one central location.



# Providing clarity throughout the voyage

EnviroManager+ is a simple, user-friendly solution that allows teams on ship and shore to stay fully informed of all environmental regulations.



## Ensuring compliance with marine environmental regulations across a fleet is a complex undertaking.

As the scope of the task grows with new rules and regulations, staying up to date is becoming an increasingly difficult task for mariners. As is avoiding the risk of non-compliance and potentially costly violations.

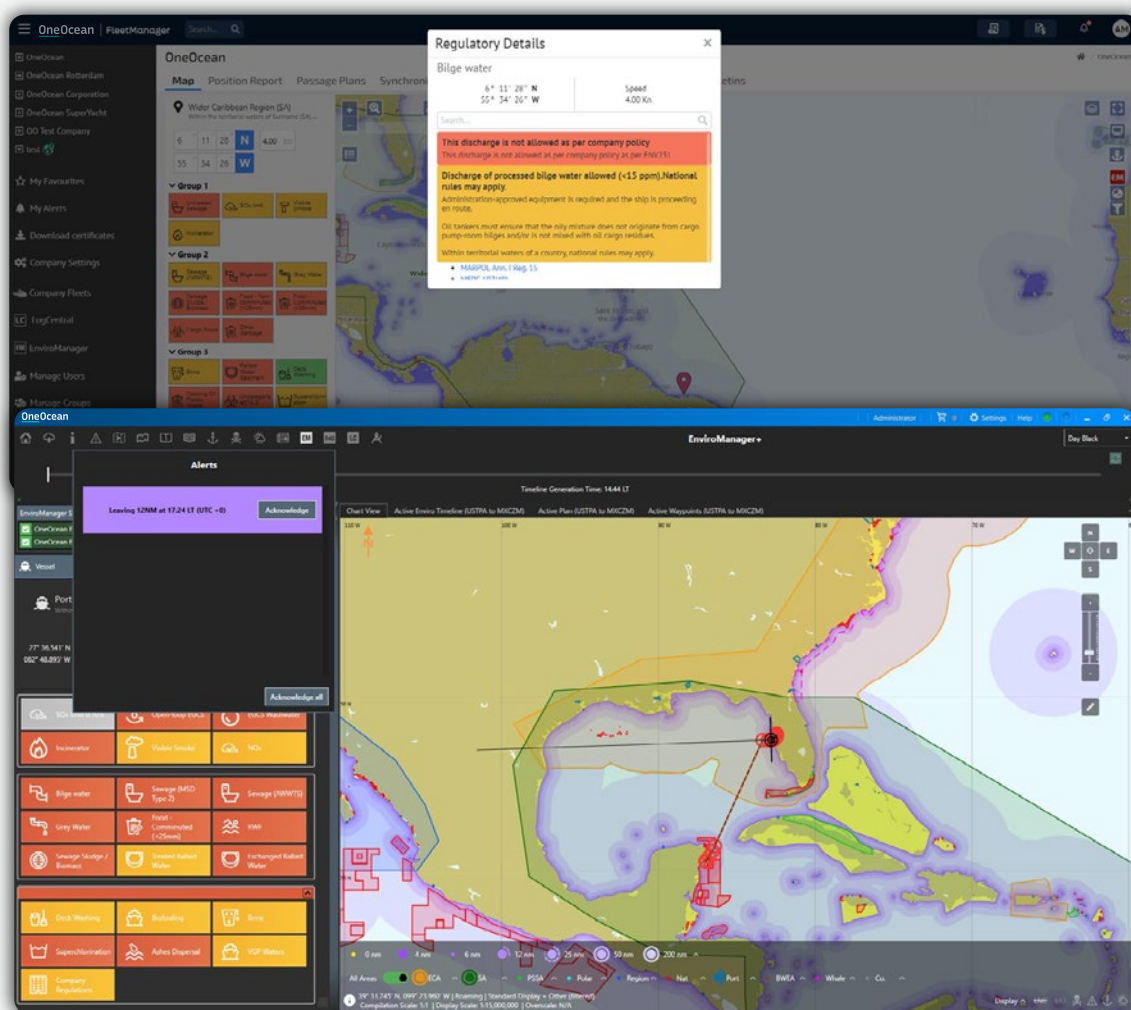
A digital map visualises the precise and up-to-date boundaries where environmental regulations are in effect, enabling the creation of safe, compliant passage plans. The solution is also customisable to your vessel's specifications, helping teams identify relevant regulations and assess their impact on onboard operations. It provides all the insights needed to plan detailed and compliant voyages with confidence and peace of mind.

# Fleet-wide compliance made simple with **consistent environmental policies**

Environmental standards and regulations vary significantly across jurisdictions, often leading to errors, confusion, and the risk of non-compliance.

EnviroManager+ helps companies navigate regulatory complexity by enabling shoreside teams to create and deploy internal environmental policies that go beyond minimum requirements. These company-wide standards establish a consistent operational baseline across the fleet, reducing ambiguity about when and where regulations or policies apply.

By providing onboard teams with clear, real-time access to these policies, the solution ensures adherence to higher operating standards, streamlines workflows, and makes training new officers easier. This functionality not only mitigates the risk of miscommunication but also strengthens compliance, enabling organisations to achieve uniformity and confidence across their fleets.



# Empowering maritime operations for **safer seas** and **stronger compliance**

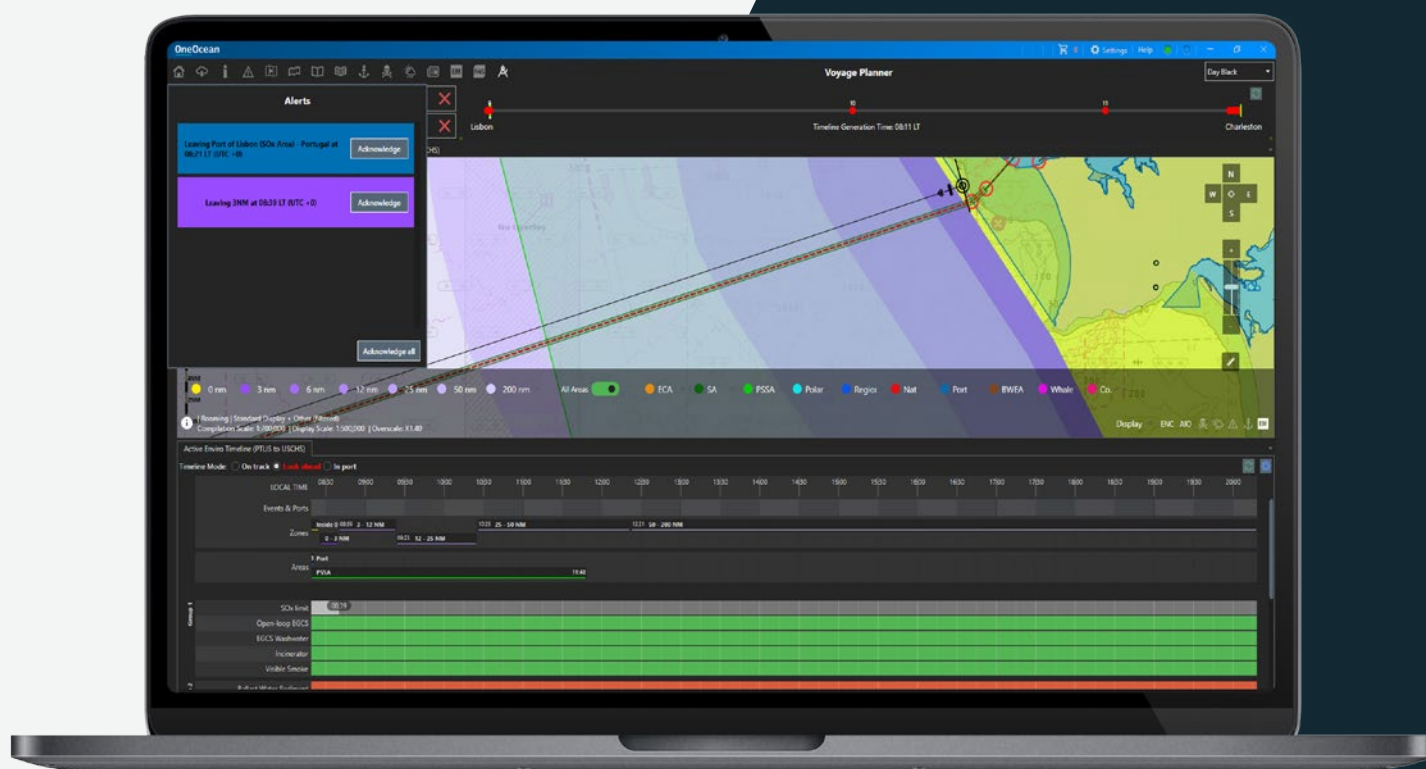


The Dynamic Timeline offers a rolling 12-hour view of relevant environmental regulations along a ship's planned voyage route, complete from berth to berth.

Tailored to the vessel's equipment, it organises regulations by waste stream, using a green/amber/red system to clearly indicate permissions. Green means an operation is fully permitted, amber signals that restrictions apply, and red indicates it is prohibited. This detailed breakdown removes ambiguity, ensuring precise operational planning and a clear understanding of when and where regulations apply.

The timeline provides access to environmental regulations in force at specific locations, concise summaries of requirements at key coordinates, and an estimated sequence of regulatory events along the route. Timelines can be regenerated mid-voyage to reflect changes in plans or course corrections, ensuring uninterrupted compliance.

# Empowering maritime operations for **safer seas** and **stronger compliance**



Predictive email alerts can be set by shoreside teams to notify select personnel when a vessel is approaching or exiting baselines or zones regulated under MARPOL or other governing bodies, reducing the risk of non-compliance. Teams on board can also set alerts for entering or exiting areas.

By providing detailed, real-time insights – such as the name of the next zone or baseline to be crossed – EnviroManager+ enhances situational awareness and makes compliance management straightforward. It helps fleets uphold elevated internal standards, standardise operations, and streamline officer training, ensuring each voyage is efficient, consistent, and compliant.

# EnviroManager+

## Efficient, clean, and compliant voyages for safer seas

### Highlights

**Visual cues** easily identify where regulations are in force.

**Integrating EnviroManager+** with PassageManager streamlines planning by displaying environmental regulation zones alongside ENCs, navigational waypoints, port, tidal, weather, and risk alerts on a dynamic interface.

**Verified and monitored** by OneOcean's dedicated team of industry experts, led by experienced maritime professionals.

**Shoreside view in FleetManager** supports situational awareness and monitoring.

**Dynamic Timeline** view displays environmental events occurring throughout a voyage and allows continuous monitoring, dynamically updating as plans evolve.

**Company-wide environmental standards** are set, deployed, and consistently applied across fleets via FleetManager.

**Traffic-light notification system** to clearly display permissions.

### Benefits

**Make informed decisions** with enhanced situational awareness.

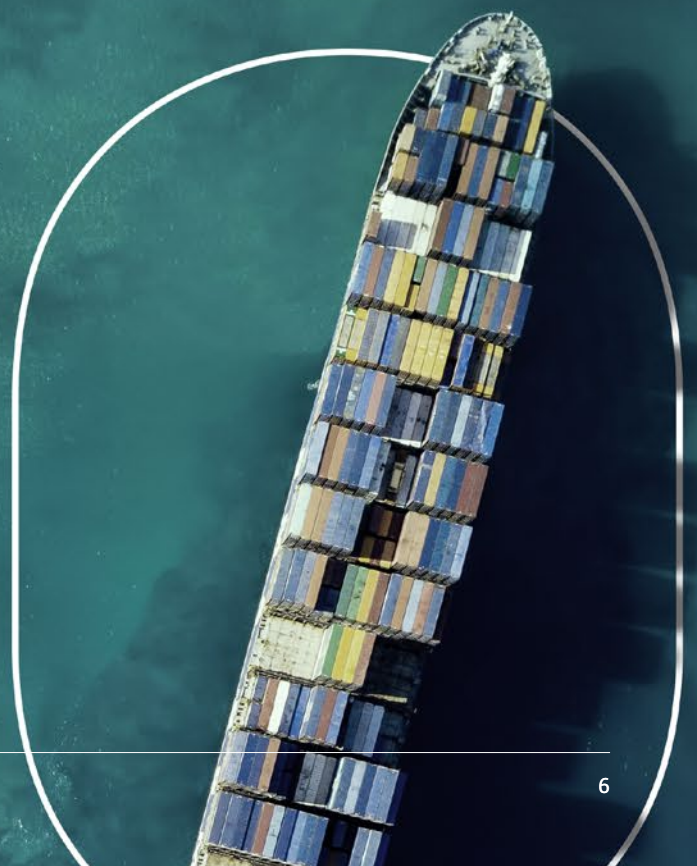
**Strengthen your organisation's environmental profile** by embedding higher compliance standards.

**Lower the risk of costly fines and reputational damage** from non-compliance.

**Achieve smooth compliance** by aligning with ISO 14001 requirements.

**Save valuable time** during passage planning.

**Ensure consistent fleet-wide compliance** by implementing shoreside policy changes instantly.




# Find out more about **EnviroManager+**

---



[oneocean.com/EMplus](https://oneocean.com/EMplus)  
[enquiries@oneocean.com](mailto:enquiries@oneocean.com)

 [oneocean](#)

Lloyd's Register, LR, OneOcean and variants of it are trading names of Lloyd's Register Group Limited, its subsidiaries and affiliates. Copyright © 2025 OneOcean Group Limited. A member of the Lloyd's Register group.

**OneOcean**