

PASSAGE PLANNING
COMPLIANCE
SAFETY
ENVIRONMENTAL

FleetManager

Enabling shoreside teams to provide active support and monitor vessels at anytime and anywhere.



Onboard | Onshore | Online
oneocean.com

OneOcean

Introducing FleetManager

In an increasingly competitive environment, with complex and evolving compliance regulations, managing and supporting your fleet with everything from safety, outfit management and approvals, to emergency situations is time-critical.

Taking the stress out of managing fleets

Providing effective support can prove difficult, particularly when the information received may be delayed or is missing vital elements.

Redefining ship monitoring

FleetManager is redefining ship monitoring, enabling owners and managers to be an extension to crew with real-time situational awareness and support.

FleetManager is an intuitive, solution that enables shoreside personnel to monitor vessels any time using both satellite and terrestrial AIS tracking. This solution provides real-time intelligence and advanced situational awareness for complete fleet safety peace of mind.

Fleet safety and support

With up-to-the-minute information on vessel locations and automatic alerts to deviations from passage plans, shoreside teams can provide time-critical support to crews in emergency situations.

Customisation

Shoreside teams can add in voyage parameters, requirements for passage plans and even set the equipment types on board vessels to support company and compliance requirements onboard. Crew will see visual alerts advising them of restrictions in place, to guide onboard decisions.

Outfit management

FleetManager increases visibility for shoreside teams, enabling them to manage and approve a vessel's B2B order remotely, auditing its navigation and compliance status to provide valuable assistance to crews.

A real-time monitoring solution, FleetManager offers advanced situational awareness and maritime intelligence.

Simple and intuitive

FleetManager is simple and easy-to-use. Its intuitive interface provides at-a-glance monitoring.

Smarter working

FleetManager supports smarter working. This innovative solution connects crew and shoreside teams, increasing transparency, improving communications, and facilitating coordinated and informed decision-making.

Operational efficiencies

Through automated communication and real-time updates, operational efficiency is improved.

Fleet visibility

FleetManager provides onshore teams with live vessel positions, actively tracking movements against passage plans.

Emergency assistance

Any deviations are quickly identified, and automated alerts are sent to the DPA or Fleet Manager, enabling rapid response to emergencies and time-critical support.

Improving fleet safety & support

Through a single web-based platform, fleet management teams can locate any vessel in the fleet at any time and identify any deviations from approved passage plans.

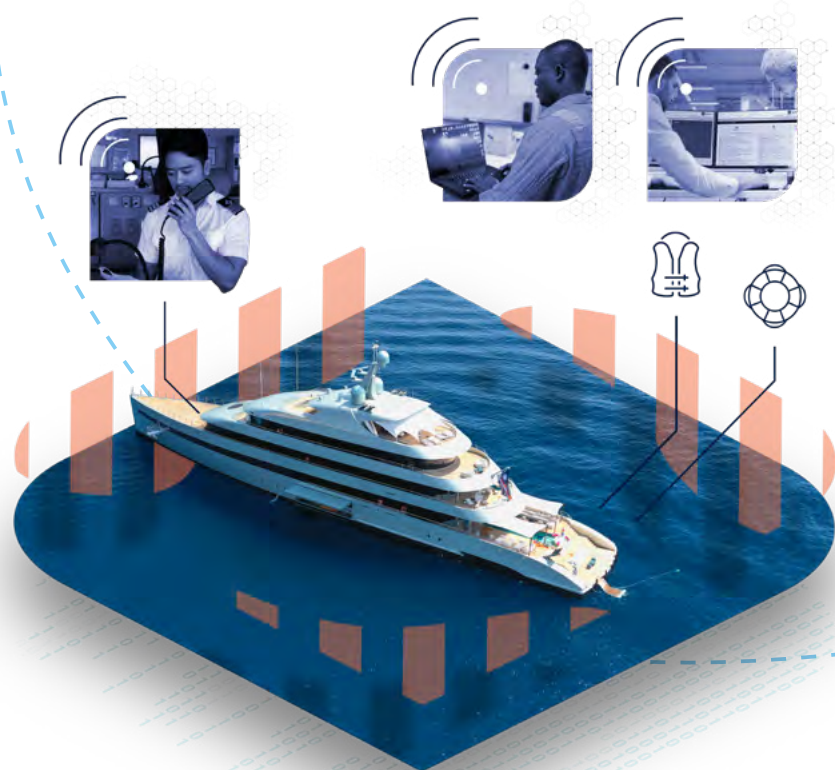
FleetManager includes a range of ECDIS-type functionality like the VRM/EBL tool and pin drop with note insertion functionality, to assist in shoreside evaluation and management of emergency situations. This gives the tools to make time-critical decisions and provide support to crews in emergencies.

One shared view

In order to confidently and accurately advise crew, FleetManager provides shoreside teams with ENC, EnviroManager, High Risk and Weather layers – enabling them to monitor local conditions and see what the vessel sees. This also includes:

- ECAs
- PSSAs
- Load lines
- Time zones
- Joint war risk areas

This shared view helps shoreside teams to identify potential sources of delay or hazards and provide valuable support and assistance to the onboard team.



Enabling shoreside teams to:

- View and monitor fleet passage plans generated in OneOcean
- Download chart outfits in PDF, RTF, XML or CSV formats
- See what the onboard crew sees, with a number of overlay features that are included in the OneOcean platform available in FleetManager, providing an accurate view of local conditions
- Provide support from anywhere with mobile enabled access
- Audit vessel outfits and activities
- Check subscription status, software versions installed and data usage

Customisation

Shoreside teams can customise fleet and vessel settings in FleetManager, enabling them to set vessel parameter for passage plans, equipment onboard and policies, for example UKC and CATZOC levels.

The integration of EnviroManager+ with FleetManager provides the ability to create position-based guidance just-in-time to an individual vessel or a full fleet. The visibility of these company policies and all environmental regulations is customisable by shoreside teams, enabling a standardised view across the fleet.

Improve visibility of fleet compliance

FleetManager enhances your fleet control capability with real-time tracking and full operational intelligence.

Increased visibility for shoreside teams enables personnel to monitor, advise and support compliance.

The solution provides a full overview of each vessel's outfit, enabling remote support for navigation and compliance requirements.

Key Features



Support

- Provides vital information to enable shoreside teams to offer support for safety and advice to onboard crew
- Automated alerts for deviations to passage plans allows DPAs to be informed and provide time-critical support much earlier



Visibility

- Holistic view of all vessels in the fleet and their location in the world
- Real-time monitoring solution that offers advanced situational awareness and maritime intelligence
- Shoreside teams can view ENC, EnviroManager, High Risk and Weather layers enabling them to see what the vessel sees
- Enables shoreside teams to track vessel progress along submitted passage plans through satellite and AIS tracking, which is updated in real-time



Accessibility

- A single web-based platform for managing fleets of vessels



Outfit management

- Monitor and approve orders for charts and publications



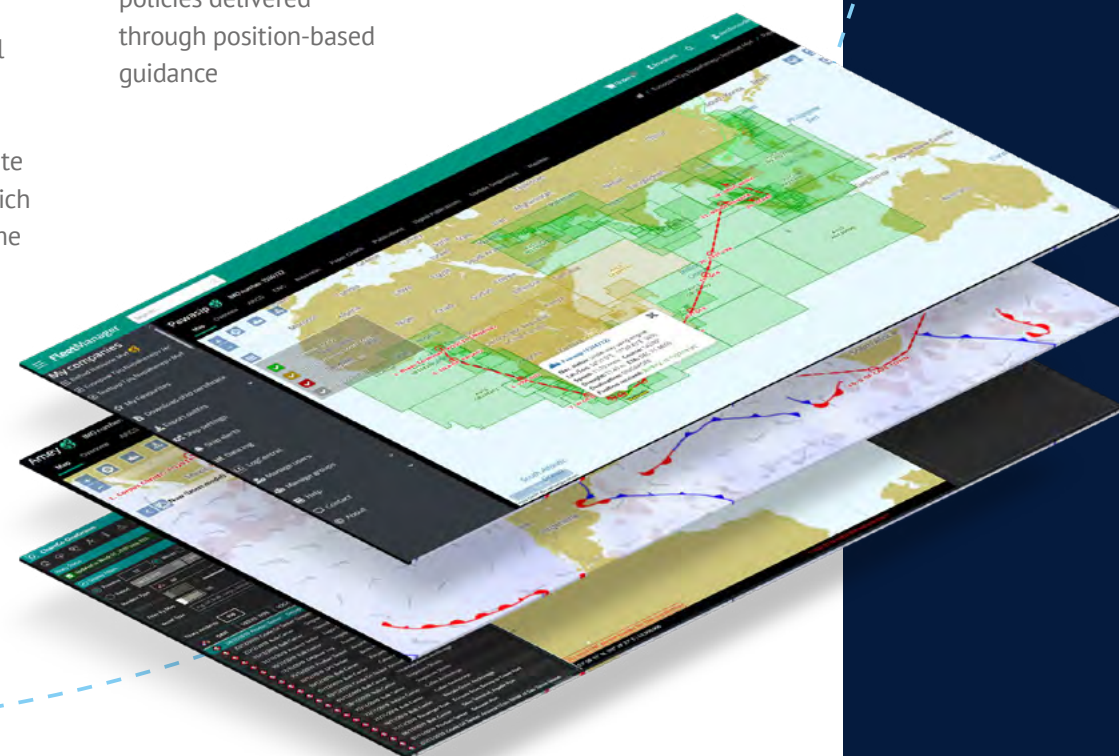
Customisation

- Passage and Voyage plan sections
- Standardisation of display onboard all vessels
- Company standards and policies delivered through position-based guidance



Security

- Secure, password protected access to ship data



About OneOcean

OneOcean

OneOcean is the largest global supplier of digital navigation and compliance solutions for the maritime industry. Our vision is to deliver solutions that reinforce safer, cleaner and more efficient working practices throughout the shipping industry.

Customer focus

OneOcean puts its customers at the heart of everything it does. It understands the need for greater connectivity between ship and shoreside teams and is committed to delivering innovative digital and SaaS solutions.

Unrivalled strength in R&D

Boasting the largest R&D capability in the sector, OneOcean is ideally placed to further develop best-in-class maritime software solutions to take ship management into a new digital era.

Global presence

With global offices in all of the major time zones, OneOcean provides its customers with unrivalled support, wherever they are in the world.

Flexible service provision

OneOcean solutions are available through a flexible service provision – making it adaptable and scalable to work for your needs.

Contact us today to find out more about FleetManager.

FM

The trusted solution for effective fleet management

Contact us today to see FleetManager in action, request a free trial or talk to us about the OneOcean suite of solutions.

For further assistance, call:
+44 (0)199 280 5400

For more information, visit:
enquiries@oneocean.com