



COMPLIANCE

Environmental Compliance: EnviroManager+

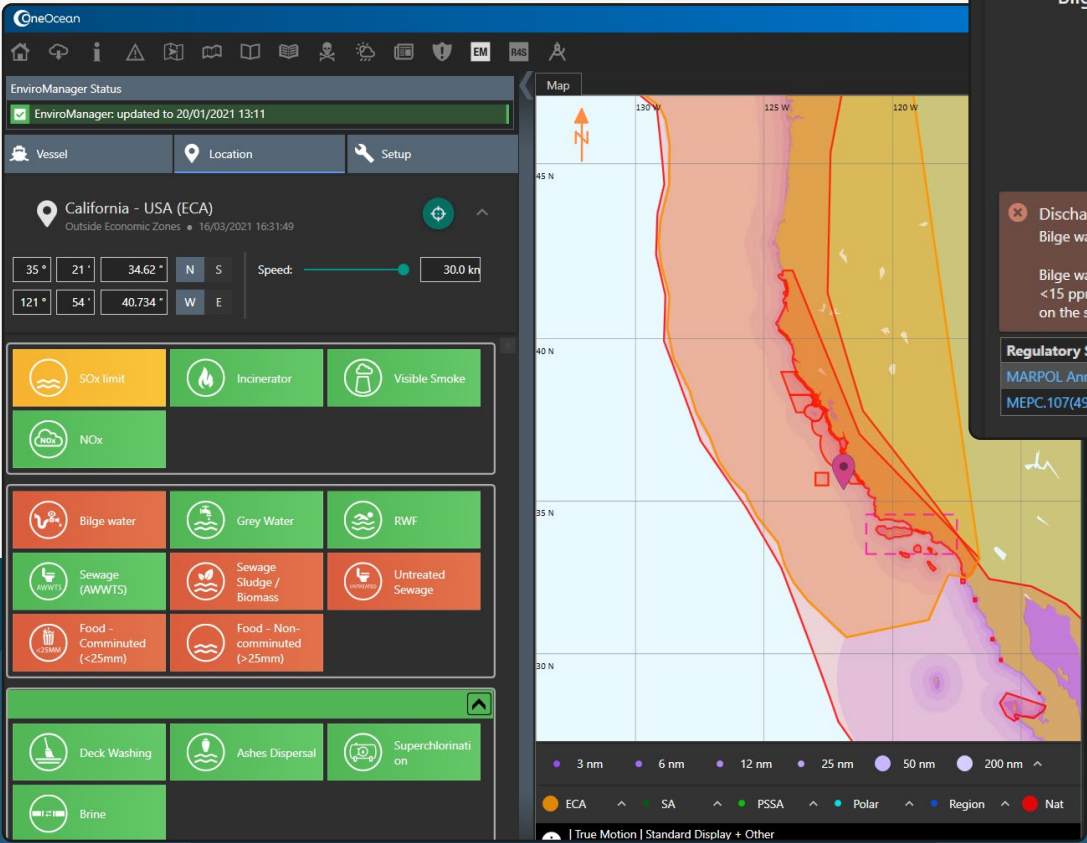
Efficient, clean, and compliant
voyages for safer seas



Plan ahead and exceed regulations

OneOcean Compliance transforms how ship and shoreside personnel manage environmental compliance, providing clarity and peace of mind on environmental requirements along routes. Its innovative digital map simplifies planning and implementation by eliminating the time-consuming task of sourcing regulatory data. This market-leading solution equips teams with the tools needed to plan compliant operations, mitigating the risk of costly fines and reputational damage from non-compliance.

Consisting of data on over 78,000 maritime zones and 182 nations, the Environmental Compliance module, also known as EnviroManager+, empowers ship and shoreside teams to view and interrogate maritime environmental regulations in effect around the world. It also supports the setting and deployment of environmental standards across fleets from one central location.

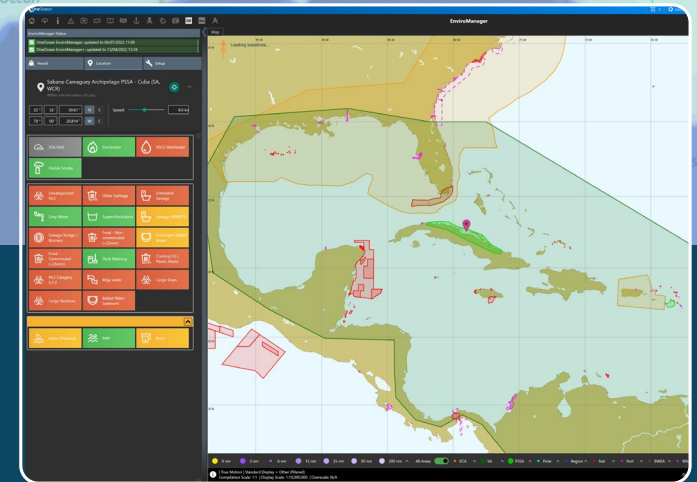
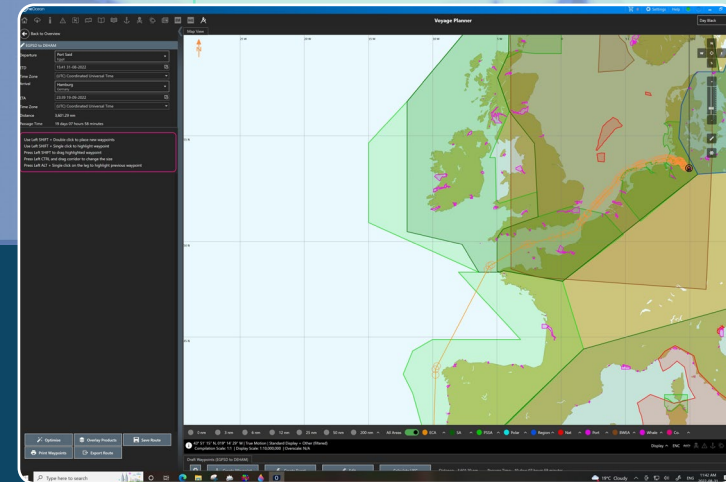
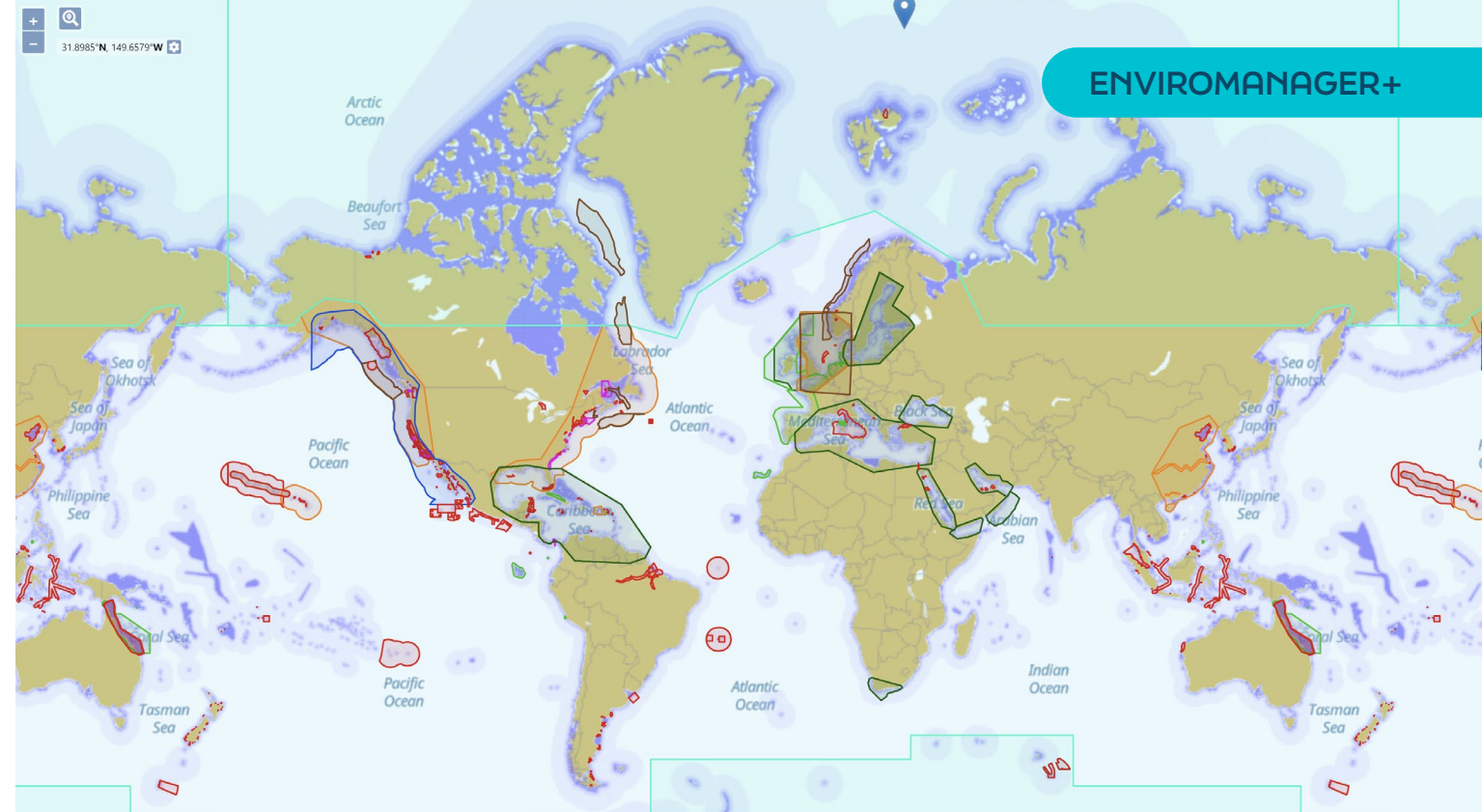


Providing clarity throughout the voyage

Ensuring compliance with marine environmental regulations across a fleet is a complex undertaking. As the scope of the task grows with new rules and regulations, staying up to date is becoming an increasingly difficult task for mariners. As is avoiding the risk of non-compliance and potentially costly violations.

Environmental Compliance is a simple, user-friendly solution that allows personnel on shore and ship to stay fully informed of all environmental regulations.

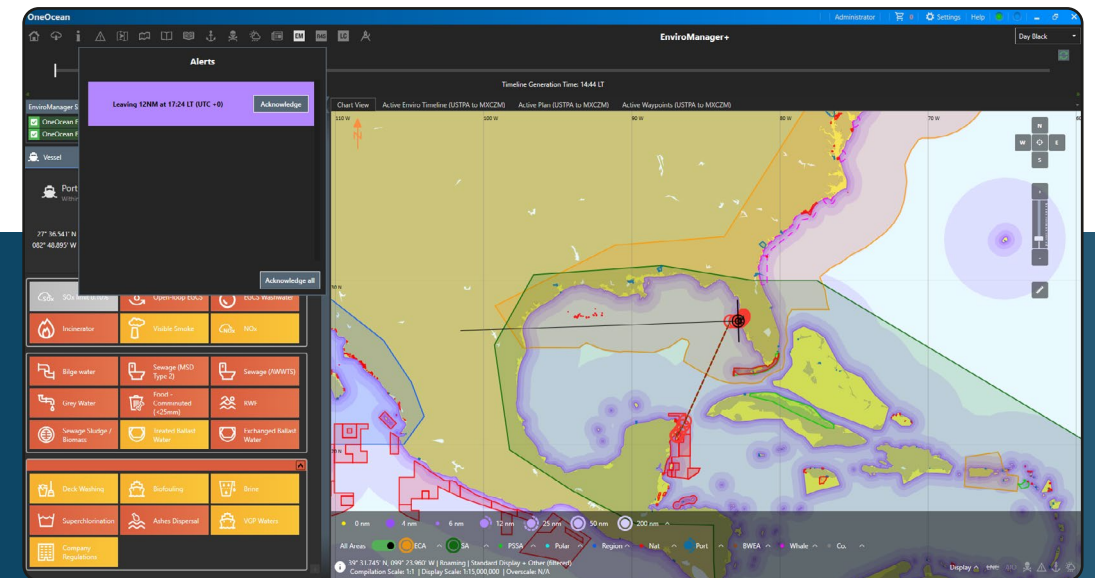
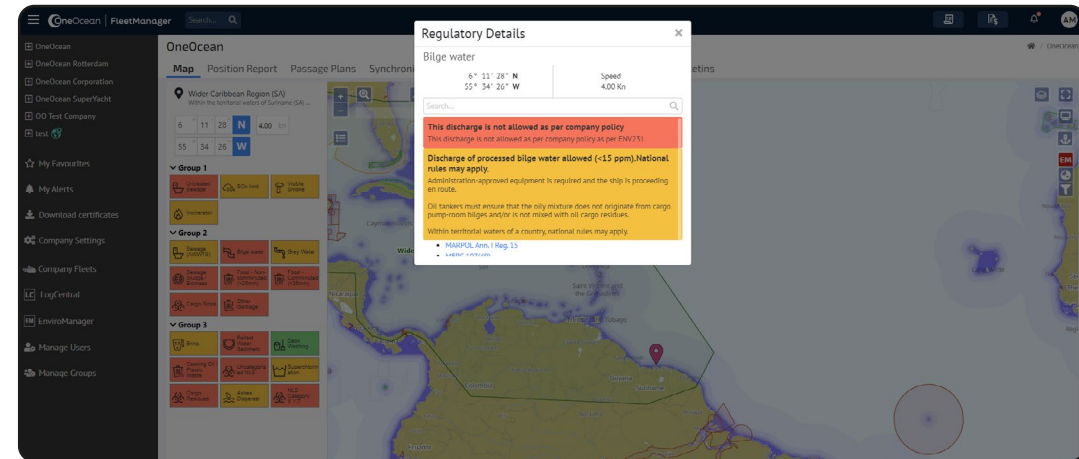
A digital map visualises the precise and up-to-date boundaries where environmental regulations are in effect, enabling the creation of safe, compliant passage plans. The solution is also customisable to your vessel's specifications, helping teams identify relevant regulations and assess their impact on onboard operations. It provides all the insights needed to plan detailed and compliant voyages with confidence and peace of mind.



Streamlining fleet-wide compliance with consistent environmental policies

Environmental standards and regulations vary significantly across jurisdictions, often leading to errors, confusion, and the risk of non-compliance. The Environmental Compliance module enables companies to simplify this complexity by creating and deploying internal environmental policies that exceed regulatory minimums. These company-wide standards establish a consistent operational baseline across the fleet, reducing ambiguity about when and where regulations or policies apply.

By providing onboard teams with clear, real-time access to these policies, the solution ensures adherence to higher operating standards, streamlines operations, and simplifies the training of new officers. This functionality not only mitigates the risk of miscommunication but also strengthens compliance, enabling organisations to achieve uniformity and operational confidence across their fleets.



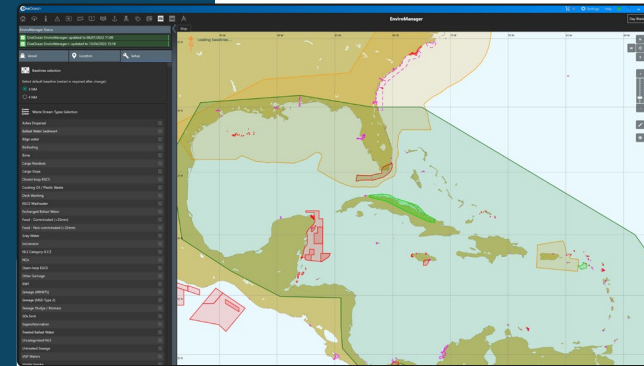
Empowering maritime operations for safer seas and stronger compliance

The Dynamic Timeline offers a rolling 12-hour view of relevant environmental regulations along a ship's planned voyage route, complete from berth to berth. Tailored to the vessel's equipment, it organises regulations by waste stream, using a green/amber/red system to clearly indicate permissions. Green means an operation is fully permitted, amber signals that restrictions apply, and red indicates it is prohibited. This detailed breakdown removes ambiguity, ensuring precise operational planning and a clear understanding of when and where regulations apply.

The timeline provides access to environmental regulations in force at specific locations, concise summaries of requirements at key coordinates, and an estimated sequence of regulatory events along the route. Timelines can be regenerated mid-voyage to reflect changes in plans or course corrections, ensuring uninterrupted compliance.

Predictive email can be set by ship or shoreside teams to notify select personnel when a vessel is approaching or exiting baselines or zones regulated under MARPOL or other governing bodies, ensuring consistency and reducing the risk of non-compliance. Teams on board can also set alerts for entering or exiting areas where there is a company-specific policy in effect. This enhances situational awareness and operational alignment.

By displaying detailed, real-time insights—including the name of the next zone or baseline to be crossed—EnviroManager+ simplifies compliance management. It supports fleets in adhering to higher internal standards, standardising operations, and streamlining officer training, ensuring every voyage is efficient, consistent, and compliant.



Highlights

Visual cues easily identify where regulations are in force.

Integrating EnviroManager+ with Voyage Planner streamlines planning by displaying environmental regulation zones alongside ENCs, navigational waypoints, port, tidal, weather, and risk alerts on a dynamic interface.

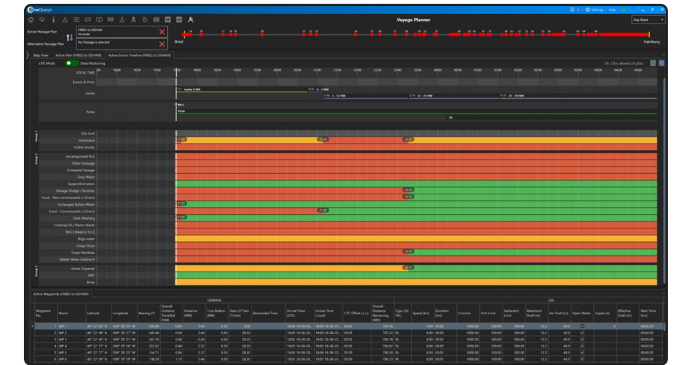
Verified and monitored by LR OneOcean's dedicated Data Governance team, led by experienced maritime professionals.

Shoreside view supports situational awareness and monitoring through the FleetManager portal

Dynamic Timeline view displays environmental events occurring throughout a voyage and allows continuous monitoring, dynamically updating as plans evolve.

Company-wide environmental standards are set, deployed, and consistently applied across fleets via vessel displays.

Traffic-light notification system to clearly display permissions.



Benefits

Enables informed decision-making with enhanced situational awareness.

Strengthens the environmental profile of an organisation by building in higher standards of compliance.

Reduces the risk of fines and reputational damage from non-compliance.

Integrates seamlessly with ISO 14001.

Saves significant time in passage planning.

Implement shoreside policy changes instantly through a web-based application to ensure consistent compliance across fleets.

Environmental Compliance



Stay informed and strengthen your environmental profile with a transparent view of all environmental regulations.

enquiries@oneocean.com

oneocean.com/enviromanagerplus

