



NAVIGATION & OPERATIONS

**Situational Awareness**

---

**Vessel Tracking**

---

**Configuration**

Providing granular detail on fleet activity with FleetManager



# Discover the digital tools to streamline fleet operations

OneOcean Operations connects data from ship to shore, visualising where regulations are in effect and where ships are in relation to them.

Data overlays can be toggled on and off to interrogate voyages for clarity, context, improved situational awareness, and enhanced decision-making. The solution enables fleets to operate with uniform standards, adapt swiftly to regulatory changes, and maintain streamlined compliance processes across all vessels.

The OneOcean Operations solution comprises two modules.

## Vessel Tracking

Utilises AIS or GPS tracking, allowing shoreside personnel to monitor fleets anywhere in the world, all through the FleetManager portal.

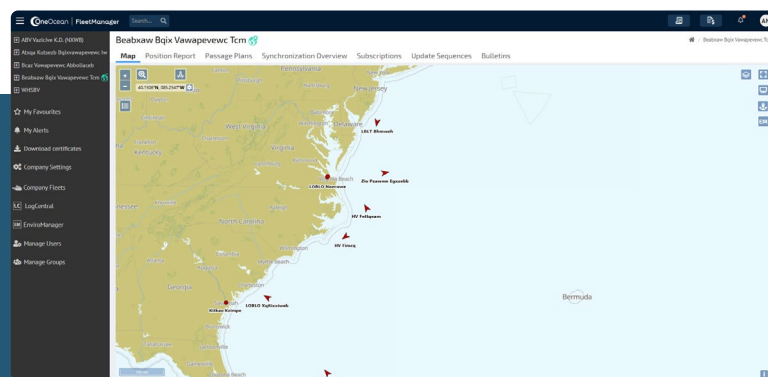
## Configuration

Shoreside teams can customise fleet and vessel settings and deploy them centrally within minutes, ensuring consistency and efficiency across operations. These settings include passage plans, safety parameters, policies, and equipment configurations. Examples include dynamic and static under keel clearance (UKC) minimum requirements, waypoint table configurations, and tailored policy settings to meet specific operational needs.

The OneOcean Operations solution is greatly enhanced when used in conjunction with OneOcean Navigation's Situational Awareness module.

## Situational Awareness

This connects shoreside teams with bridge leaders and allows them to monitor a vessel or fleet's status in real-time. So, they can provide support or action when needed.



## Situational Awareness

# Enable active support anytime, anywhere

Managing vessels from shore – particularly with fleets spread across global locations – is a significant challenge for shoreside teams. Providing effective support can prove difficult when vital information exchange is delayed or missing.

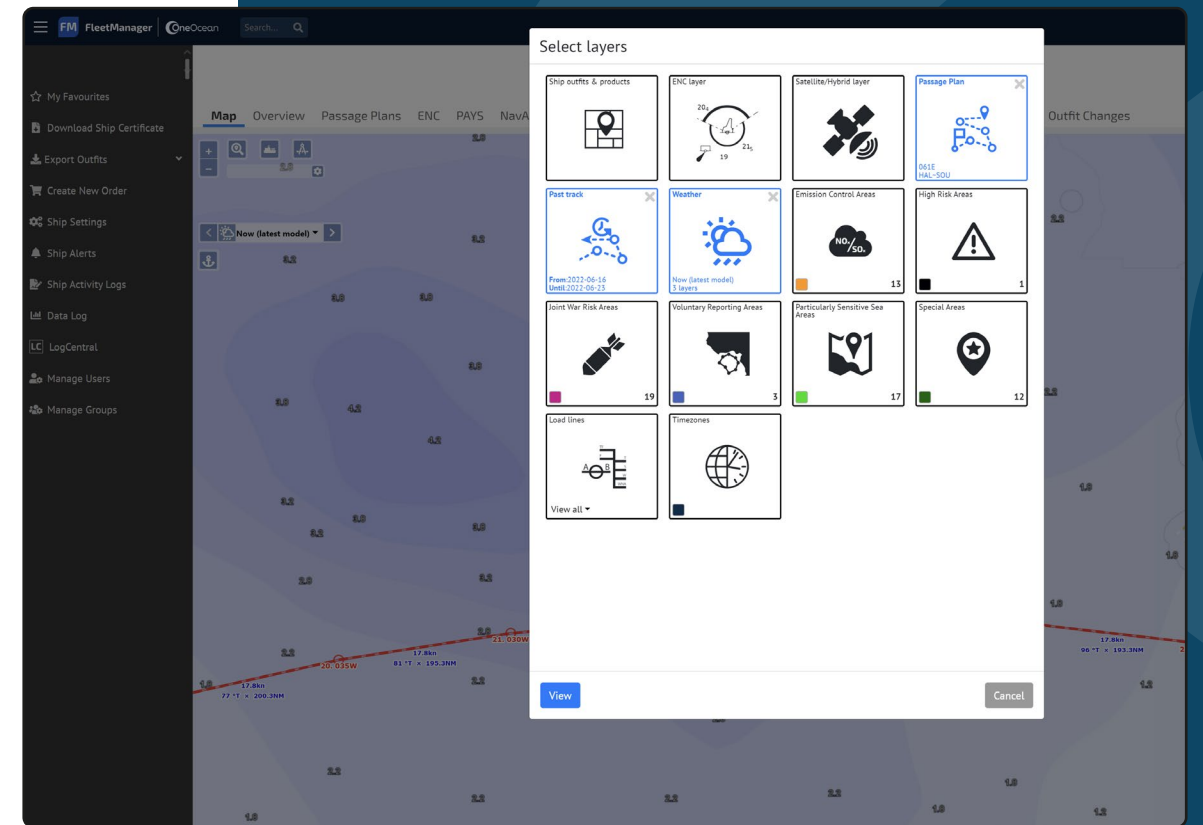
OneOcean Navigation's Situational Awareness module connects shoreside teams directly with vessels through the FleetManager portal. They can also access real-time visualisation of each ship in their fleet. The connection and visualisation together provide the situational awareness needed to support each individual vessel.

Satellite and terrestrial AIS or GPS tracks the status of a specific vessel or an entire fleet, allowing them to oversee safety and stay on top of voyages and performances. In addition to tracking vessel positions and movements against approved passage plans, AIS capability enables monitoring of other targets within a 20-nautical-mile radius, further enhancing situational awareness and reducing collision risks.

The system's advanced capabilities support proactive decision-making by providing accurate position data, alerting teams to deviations, and enabling swift corrective action.

Using a multi-layered view in FleetManager, teams can monitor a vessel or fleet's status to a granular level, combining voyage progress against plan and outfit status.

This data can be used to quickly assess each vessel and keep all stakeholders up to date. You can also better plan all the associated logistical requirements of transferring cargo, changing crews and maintaining vessels.



# Situational Awareness

## Connecting shoreside and onboard teams

OneOcean Navigation's Situational Awareness module also allows you to:

### Stay alert

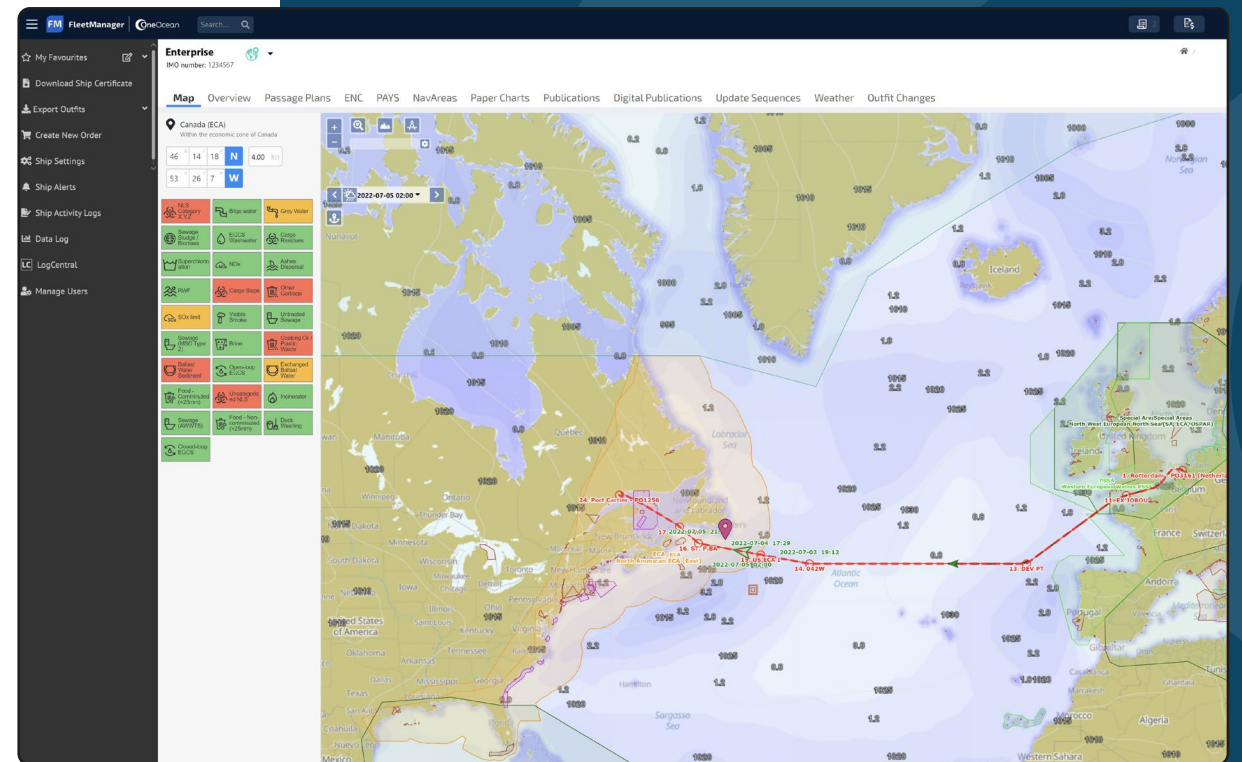
FleetManager connects shoreside stakeholders to the OneOcean Platform used aboard, providing a multi-layered display of key data, including weather, charts, global environmental zones, and high-risk areas. Shoreside teams can configure alerts to notify selected onboard and onshore personnel when vessels are approaching or navigating through environmentally regulated waters or high-risk areas, such as Joint War Risk Zones. This ensures compliance with safety protocols, mitigates potential threats, and enables proactive decision-making. By delivering accurate position data and timely alerts, the system supports swift corrective action, facilitates contextualised communication, and allows teams to provide relevant support when it's needed most.

### Customise vessel settings

Shoreside teams can customise fleet and vessel settings and deploy them within minutes to teams aboard.

These include settings related to waypoint table configuration, under keel clearance (UKC) safety parameters, waste stream configuration, or bandwidth usage when accessing Regs4ships, LR OneOcean's Regulatory Compliance solution.

By standardising how these solutions are used across vessels, these settings ensure consistency in operations, helping teams adhere to company-wide policies while reducing the risk of errors or miscommunication. Settings such as UKC safety parameters can be applied per vessel, a subset of vessels, or the full fleet, giving you complete control from one centralised platform.



# Vessel Tracking

## One view of your global fleet

Managing a fleet of vessels that are scattered across the globe presents a significant challenge for shoreside teams. Knowing the location of each vessel in the fleet, whether there are any risks evolving and if voyages are running to schedule is crucial. It's vital that updates and communications from the shoreside team can be received.

Using AIS or GPS tracking, OneOcean Operation's Vessel Tracking module is an intuitive, integrated software solution that enables shoreside personnel to monitor vessels and stay on top of voyages anywhere in the world.

By combining **Vessel Tracking** and **Situational Awareness**, all elements of the voyage can be overlaid for a contextualised visual of the vessel's situation at a frequency chosen by the business.

A visual display through FleetManager shows:

- Accurate vessel positions
- Movement against approved passage plans
- Alerts when a ship deviates from route or navigates environmentally regulated waters or Joint War Risk zones

### Highlights

**AIS or GPS** tracking

**Shoreside vessel** monitoring

**Visual display** within the FleetManager portal

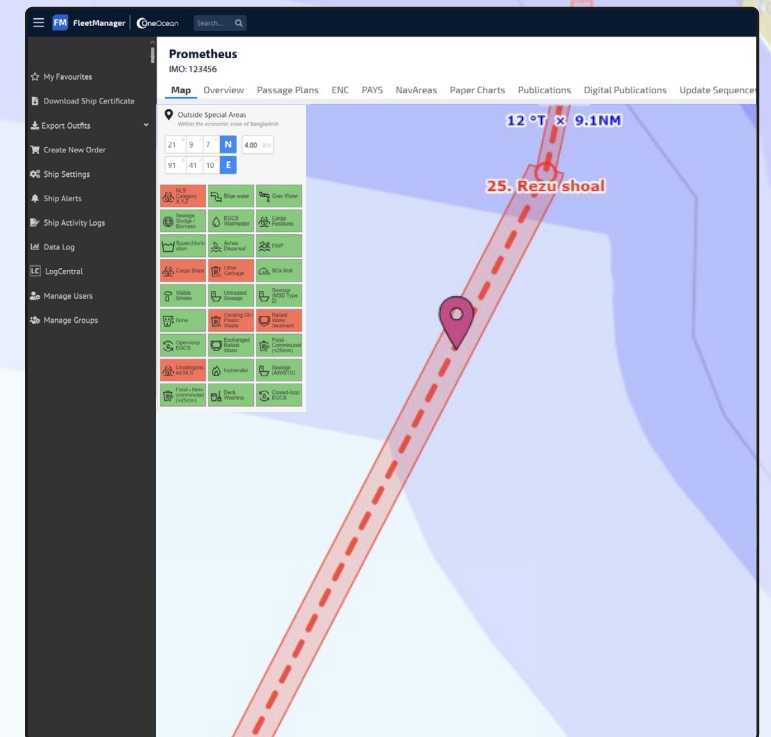
### Benefits

**Supports monitoring** by staying on top of all voyages

**Integrated** software solution

**Heightened situational awareness** for full support

**Reduced risk** of non-compliance



## Configuration

# Keeping shoreside teams in control

Overseeing fleet operations and ensuring compliance from shore can be a demanding task. It involves managing multiple vessels with different destinations and cargo, each uniquely designed with specific particulars such as size, equipment, crew capacity, and operational requirements.

The Configuration module allows shoreside teams to set and deploy a range of policies that ensure fleet-wide safety, compliance, and uniformity within minutes. Teams can push bespoke UKC allowances and squat formulas directly to vessels, ensuring that proposed routes and planned speeds comply with pre-set safety criteria. These criteria take into account the vessel's specifications, loading condition, and the navigational characteristics of the waters being traversed, providing tailored, accurate, and safe voyage plans.

Shoreside teams can also create and customise multiple UKC policies, tailoring them to meet specific company requirements and improving the accuracy of voyage planning. Waypoint Tables can also be configured and pushed from shore, reducing human error by standardising critical navigational information.

Waste stream policies further enhance the use of EnviroManager+ by breaking down environmental regulations into specific waste categories produced by vessels. These policies cover equipment settings that inform the regulatory content displayed to crew members, including environmental regulations. Additionally, to provide an added layer of company protection against violations and infractions—or to ensure adherence to company policies and procedures—parameters for waste streams or actions in specific locations and regions can be set.

Predictive alerts can be configured to notify users before a vessel enters or exits an environmental boundary, with notifications sent anywhere between 1 to 95 hours in advance. For high-risk operations, shoreside teams can set customised alerting intervals for war-risk areas, ensuring company procedures are followed. These alerts, along with other configuration settings, are automatically pushed to users of the OneOcean Platform, increasing situational awareness and ensuring timely decision-making. This information appears seamlessly, eliminating any confusion or ambiguity about compliance or the application of company policies.

### Highlights

**Parameters for safety**, policy and passage plans

**Environmental regulation** display

**Consistent visualisation** and user experience across ship and shore

### Benefits

**Customise** vessel, group or fleet settings for control and uniformity across fleets

**Reduced risk** of pollution by going above and beyond industry guidelines

**Saves bandwidth** by limiting online browsing of regulatory content

**Increased situational awareness** on board

## Situational Awareness

Give crews and vessels the support they need exactly when they need it.

## Vessel Tracking

Improve fleet visibility through a single platform approach.

## Configuration

Help your business and fleets stay safe and compliant.

[enquiries@oneocean.com](mailto:enquiries@oneocean.com)

[oneocean.com/comply](https://oneocean.com/comply)

