



NAVIGATION

Passage Planning

The intelligent approach
to maritime navigation



Passage planning made simple

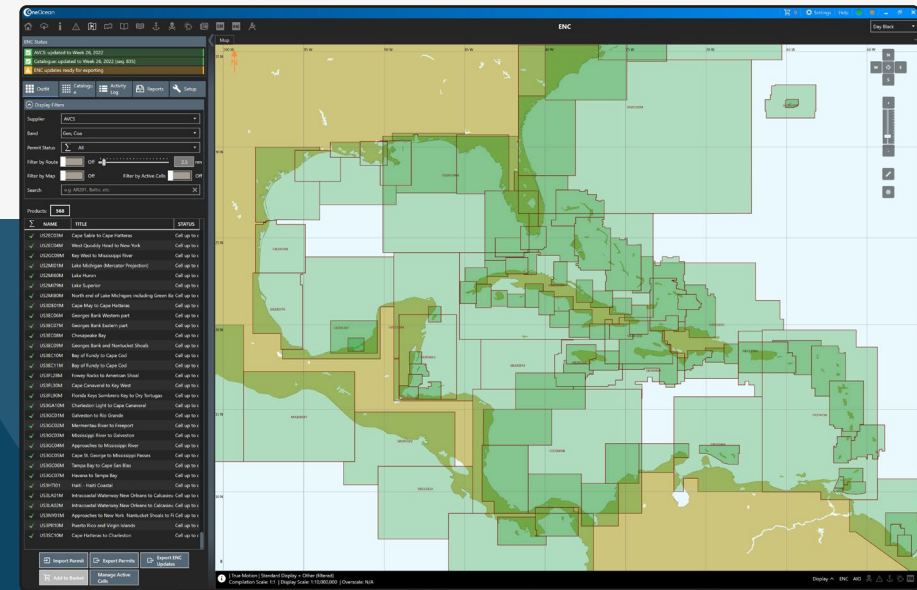
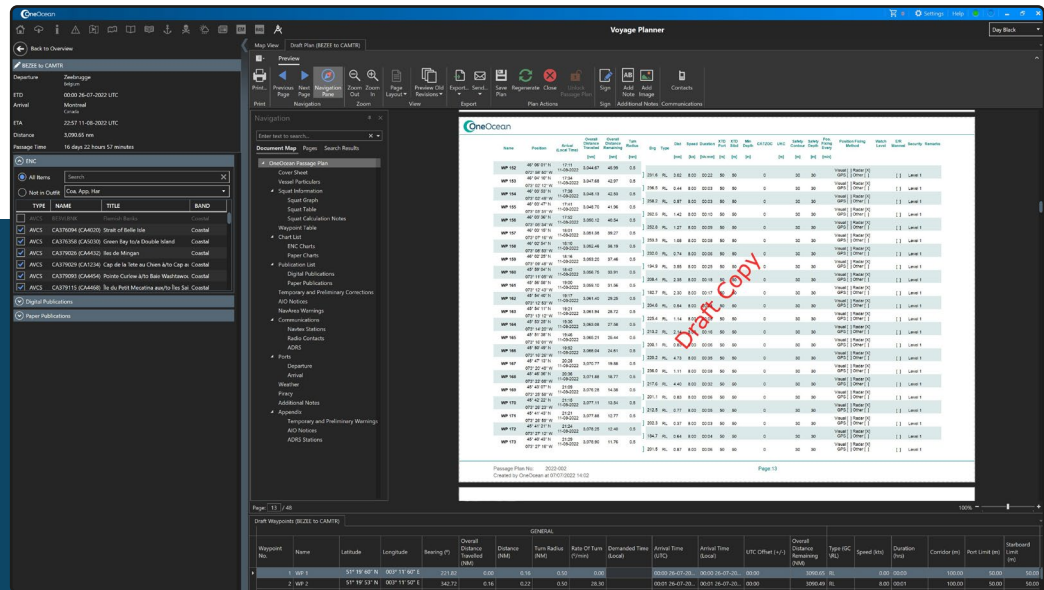
Passage planning is a compulsory process for every voyage under SOLAS regulations, ensuring safety, compliance, and operational efficiency. However, gathering and analysing critical data—such as navigational charts, weather forecasts, and environmental restrictions—while accounting for factors like vessel particulars and under keel clearance (UKC) policies can be labour-intensive and time-consuming.

The LR OneOcean Navigation module, Passage Planning (also known as Voyage Planner), simplifies this process by integrating all relevant data into a single, user-friendly platform. By automating route planning and consolidating critical datasets, the module streamlines workflows and empowers maritime professionals to plan voyages that are efficient, safe, and compliant.

Advanced tools for precise planning

With dynamically displayed charts, up-to-date weather forecasts, and environmental alerts, the Passage Planning module ensures that maritime professionals can create detailed, fully customisable plans in minutes. This module saves time and reduces human error by automatically populating data into generated routes, which include an adaptable waypoints table that users can modify to meet safety, compliance, or operational requirements.

The module also supports granular route adjustments through an intuitive interface, allowing users to toggle between data layers and optimise routes in real time. The result is a meticulous, fully traceable workflow that eliminates manual planning complexity, enhances decision-making, and ensures compliance with international regulations.



From appraisal to approval, all in one place

The LR OneOcean Passage Planning module simplifies complex processes by integrating key datasets like navigational, port, tidal and weather data into a unified solution. It automates calculations and consolidates essential information to deliver customised plans in minutes. Designed to meet bridge procedure guides, navigational requirements, and STCW Convention standards, the solution adapts to the unique specifications of each vessel and fleet.

Once the appraisal and planning process is complete, the module can generate a fully detailed passage plan, viewable within the solution and ready for export as a professionally formatted PDF. Completed plans are time-stamped, fully traceable, and include features like revision numbering, digital signatures, and mandatory sign-offs—offering clarity and accountability for audits and updates.

Benefits

Simplifies passage planning and adherence to regulations. Populating and ensuring traceability for auditing purposes.

Saves hours of time in collation and preparation by automating data population and reducing dependency on Excel.

Optimises planning by tailoring routes to vessel particulars and routing parameters, while automating real-time assessments, calculations, and adjustments—eliminating the need for manual Excel processes—to ensure safety, efficiency, and optimal performance in dynamic environments.

Reduces grounding risks with advanced UKC management by dynamically factoring in vessel conditions—such as configurable squat effects and proximity to the seabed—while ensuring compliance with industry and company regulations.

Reduces risk of human error by automating data population and calculations, ensuring accurate, reliable passage plans every time.

Ensures full traceability with time-stamped plans, revision numbering, and digital sign-offs, simplifying audits and demonstrating compliance with ease.

Advanced features

Under keel clearance (UKC) management: Allows users to create multiple static, dynamic, or combined UKC policies. Includes configurable squat integration to dynamically update effective draft and align with IMO regulations, as well as automated overhead clearance calculations. These can also be configured and standardised by shoreside personnel.

Integration with UKHO TotalTide: Automatically populates tidal heights for time-savings and accuracy in tidal planning.

Configurable waypoints table: Ensures safety and consistency across fleets by integrating navigation, UKC, and safety data, with shoreside configuration available to standardise settings across all vessels.

Regenerative passage plans: Plans can be revised with full traceability, complete with officer ranks, digital signatures, and revision control for auditing.

Comprehensive charts and publications table: Provides visibility of ENC charts, AIO Notices, ADP areas, and Navarea warnings, ensuring bridge teams are fully informed for each leg of the journey.

For greater efficiencies, you can use Passage Planning alongside the Route Optimisation module of OneOcean Navigation to further improve time, cost, and fuel output.

[Explore Route Optimisation](#)

Passage Planning

Speed up passage planning with instant access to all relevant voyage data.

enquiries@oneocean.com

oneocean.com/passageplanning

